



Walking pads - Gardens - Bicycle roads - Parks

LED Classic European Style

TECHNICAL DATA

FPE Classic luminaires are technical luminaires that are designed to fulfil most demanding light calculation scenes like S, ME, CE classes with different adaptation to local lighting standards. At the same time housing are ornamental, either lantern type or hat type.

Electrical characteristics

- 230V input
- Power factor at full load more than 0,95.
- Up to 99% driver efficiency at full load with Philips Xitanium led driver.
- Dimming options: Lumistep as standard; Dynadimmer upon request
- 6kV surge protection as standard; 10kV protection upon request.
- Protection class I or protection class II.



Xitanium LED Driver

Mechanical characteristics

- Lanterns are made of casted aluminium, "hat" style luminaires are made of aluminium sheet with process of metal spinning.
- Lanterns can be supplied as top pole or console model.
- Head style luminaires are made as top pole model or suspended version.
- Products are equipped with 0,5m connecting electrical cable.
- Housings are dust painted with epoxy paint thermal treatment to ensure long-term environmental protection against all weather conditions. Colour is anthracite grey, other colours are upon request.
- All screws are made of stainless steel.
- All gaskets are made of ozone and UV resistant silicone for IP65 protections.

LEDs



In below spreadsheet there are stated total – system W. Below lumen is LED lumen. System lumen is available for each optic in elumdata file and is lower than LED lumen for app 4-9% (depend of type of lens).

Standard colour temperature is 4000K. We offer also 3000K version with app 13% lower lumen output. In addition, up to 6500K versions are available with same lumen output as 4000K.



XPL LED

12 LED

| | | |
|---------|-----------|----------------|
| 500 mA | 21W (sys) | 2.750 lm (LED) |
| 600 mA | 25W (sys) | 3.300 lm (LED) |
| 700 mA | 29W (sys) | 3.700 lm (LED) |
| 800 mA | 34W (sys) | 4.150 lm (LED) |
| 900 mA | 38W (sys) | 4.500 lm (LED) |
| 1000 mA | 42W (sys) | 4.900 lm (LED) |



Upon request, we can supply also The classic with driving below 500mA.



TECHNICAL DATA

Optical characteristics

- We are using high efficient Cree LED type XPL, that ensures long life time and highest lm / w efficiency in industry.
- Standardly we are using PMMA that is 100% UV resistant which prevents against yellowing over the entire life time.
- Polycarbonate lenses ensure high impact resistance.
- Photometric files are available upon request.

Optic G, Elumdata files available upon request!

Optimised for ME road classes and wider roads

Pole height from 7 – 12m, pole spacing from 25 – 45m

Luminous flux (luminaire): 28 779 lm

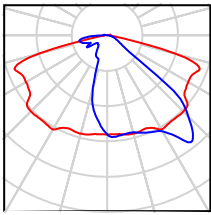
Luminaire wattage: 210 W

Arrangement: single row, bottom

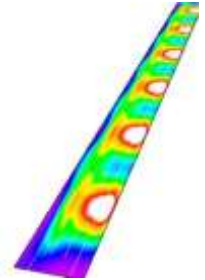
Road width: 10.5 m

Pole distance: 37 m

Mounting height: 12 m



| | L_{av} (cd/m ²) | U_0 | U_1 | TI (%) | SR |
|-------------------------|-------------------------------|--------------------------|--------------------------|--------------------------|--------------------------|
| Calculated values | 2.04 | 0.58 | 0.72 | 10 | 0.67 |
| Required values | ≥2.00 | ≥0.40 | ≥0.70 | ≤10 | ≥0.50 |
| Fulfilled/Not fulfilled | <input type="checkbox"/> | <input type="checkbox"/> | <input type="checkbox"/> | <input type="checkbox"/> | <input type="checkbox"/> |



Optic C, Elumdata files available upon request!

Optimised for S road classes and narrow roads

Pole height from 4 – 8m, pole spacing from 25 – 45m

Luminous flux (luminaire): 6 957 lm

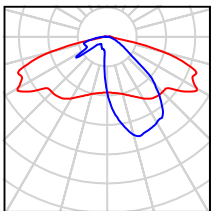
Luminaire wattage: 51 W

Arrangement: single row, bottom

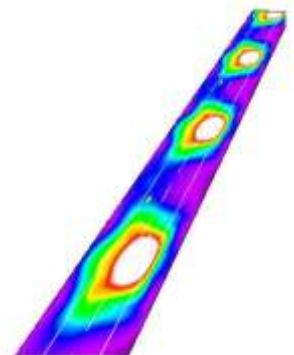
Road width: 7 m

Pole distance: 58 m

Mounting height: 10 m



| | $E_m(R3)(lx)$ | E_m/E_{min} | L_{vmax}/L_m |
|-------------------------|--------------------------|--------------------------|--------------------------|
| Calculated values | 9.0 | 3.9 | 0.3 |
| Required values | ≥9.0 | ≤4.0 | ≤0.4 |
| Fulfilled/Not fulfilled | <input type="checkbox"/> | <input type="checkbox"/> | <input type="checkbox"/> |


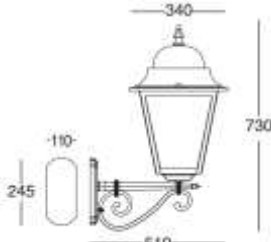


Above are just catalogue examples, please send us specific road situation and we will advise you the right lamp based on the lighting calculation.


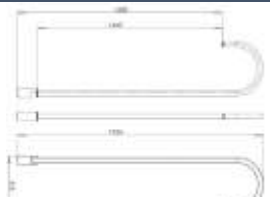


TECHNICAL DATA

Lantern

| | |
|---|---|
|  |  |
| Top pole | Console |
| Gross weight: 5kg Net weight: 4 kg Box dimension: 60 x 40 x 40 cm Full euro pallet dimension: 18 units: 80 x 120 x 200 cm | Gross weight: 6kg Net weight: 5 kg Box dimension: 60 x 40 x 40 cm Full euro pallet dimension: 18 units: 80 x 120 x 200 cm |

Hat style

| | | |
|---|---|--------------------|
|  |  | |
| Suspended kit | Console | Top pole connector |
| Gross weight: 7kg Net weight: 6 kg Box dimension: 60 x 60 x 40 cm Full euro pallet dimension: 12 units: 80 x 120 x 200 cm | Gross weight: 10,1kg Net weight: 10 kg Box dimension: upon agreement Full euro pallet dimension: upon agreement | |

Operating temperature from -40°C up to 55°C .

Standard warranty is 5 years and can be optionally extended



Manufacturer reserves all rights to make changes in materials and components used in its products. All data are subject to change without prior notice.